

# Integrated smoke control solutions



Car parks



Staircases



Firefighting lobbies



Evacuation routes



**EN-12101-3**  
Powered smoke and heat  
exhaust ventilators for use  
in Construction Works



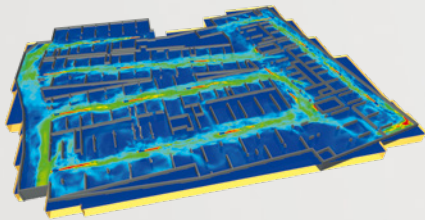
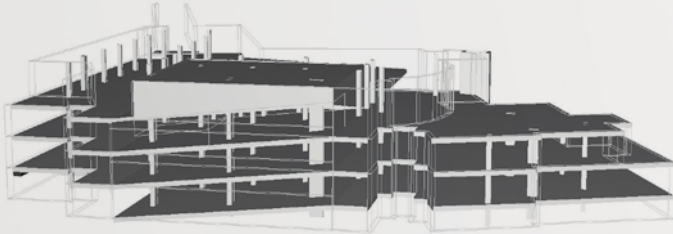
SODECA offers solutions in industrial ventilation, smoke evacuation, staircase pressurisation, tunnel ventilation and indoor air quality improvement.



SODECA has grown looking for the best way forward, always innovating and offering the best customer service, respecting the environment and committed to energy saving. For this reason SODECA wants to be part of the change and focus on a sustainable model.

The environmental management system at SODECA's production plant is **certified ISO 14001 by Bureau Veritas**, which endorses the environmental performance and the continuous improvement resulting from the development of activities to mitigate the impact on the environment. At SODECA, sustainable solutions are integrated into the business strategy by manufacturing using clean energy, reducing emissions and working to reduce waste.

## Experts in smoke control



SODECA has wide experience in the design and fabrication of equipment for ventilation and smoke exhaust in car parks.

Our projects department distinguishes itself from other companies by offering project design services and best-practise advice. It has specialist technicians who can deliver a comprehensive technical study, including sizing of equipment and required plant space.

They are experienced users of advanced Computational Fluid Dynamics (CFD) software, which they use to validate design parameters and simulate values such as smoke behaviour, temperature, visibility, air velocities and CO concentration.

## Comprehensive **solutions**

SODECA adapts to the needs of each client, offering comprehensive ventilation and smoke control solutions:

- **CAR PARK VENTILATION.**
- **PRESSURISATION FOR STAIRCASES AND ESCAPE ROUTES.**
- **SMOKE EXTRACT CONTROL SYSTEMS.**



In addition, SODECA **offers the option of testing installations using real** (hot) smoke tests.





## Ventilations for **car parks**

In modern buildings, car parks are now another feature of the building architecture. In many cases, they are the first space visitors enter in buildings such as shopping centres, entertainment complexes, offices and passenger transport hubs.

Correct car park ventilation plays an important role in the first impressions of a visitor. For this reason, they must be designed to satisfy the highest environmental quality standards. In other words, the lowest possible concentrations of contaminant gases must be achieved, whilst at the same time, eliminating foul odours.

But these are not the only factors. A high degree of safety must be guaranteed in the event of fire and car park ventilation is essential for providing adequate conditions for evacuation of occupants and to aid fire-fighting operations.



### **VISIBILITY**

Improved visibility  
in the fire zone



### **AIR**

Supply of fresh air  
to reduce smoke toxicity



### **TEMPERATURE**

Reduction of air  
temperature in the fire zone

## Jet fan smoke control system

Jet fan smoke control systems are considered the most suitable ventilation solution for large, unobstructed spaces such as car parks and tunnels.

Installing this type of fan reduces the need to install air supply and extract ducts, improving visibility in car parks and increasing available clearance height. In the event of fire, the jet fans generate an air current that pushes smoke toward extract points.



### JET FANS

### OTHER



**THT/IMP**



**CI**



**THT**



**THT/HATCH**



**THT/WALL  
THT/WALL-F**

Applications				
Ventilation for contaminant gas control. Ventilation in the event of fire.	Ventilation for contaminant gas control. Ventilation in the event of fire.	Ventilation for contaminant gas control. Ventilation in the event of fire.	Ventilation for contaminant gas control. Ventilation in the event of fire.	Ventilation for contaminant gas control. Ventilation in the event of fire.
Installation				
Indoor. Below ceiling	Indoor. Below ceiling	Indoor, in ventilation shafts or plant room.	On the roof	Façade
Safety switch				
Included in L and O versions. C version on request.	Included	On request	Included	On request
2-speed fan				
Yes	Yes	1 or 2-speed versions	1 or 2-speed versions	1 or 2-speed versions
Temperature classification based on EN 12101-3				
F300 / F400 <sub>120</sub>	F300 / F400 <sub>120</sub>	F300 / F400 <sub>120</sub>	F300 / F400 <sub>120</sub>	F300 / F400 <sub>120</sub>
Version without temperature classification				
HCT/IMP	CI-CO	HCT/HGT	HCT/HATCH	WALL/DUCT
Reversible fan version				
Yes	No	Yes	Yes	Yes



## Pressurisation for **staircases and escape routes**

Pressurisation control systems prevent smoke from entering escape routes by pressurising those spaces. When the system is running, if doors are opened or in the event of air leakage, the system reacts by increasing the airflow rate. This guarantees that escape routes are always free of smoke in an emergency situation.

Escape routes include corridors, staircases, lifts and lobbies.



### **VISIBILITY**

Visibility is ensured



### **EVACUATION**

Safe evacuation of  
occupants



### **SAFETY**

Easy access for firefighters



When selecting and classifying a system for a specific project, it is necessary to consider the building use, size and evacuation instructions in the event of fire. These criteria will help determine the necessary flow rate delivered by the pressurisation equipment.

The choice of system is very important as, this will also determine flow rates depending on the class.

**FULL RANGE**
**ADVANCED**
**BASIC**


	KIT HATCH PDS	KIT BOXPDS SMART KIT BOXPDS SMART II	KIT BOXPDS KIT BOXPDS II	KIT BOXSMART KIT BOXSMART II	KIT BOXSMART FLAP	KIT BOXSMART EC	KIT BOXPRES PLUS KIT BOXPRES PLUS II	KIT SOBREPRESIÓN	PRESSKIT
APPLICATIONS	Staircases, passageways, lift shafts, lobbies								Lobbies
INSTALLATION	Roofs	Roofs, interiors							Only lobbies
NO/NC SELECTABLE ACTIVATION CONTACT	YES	YES	YES	YES	YES	YES	-	-	YES
OPERATES IN THE EVENT OF LOSS OF ACTIVATION SIGNAL	YES	YES	YES	YES	YES	YES	YES	-	YES
STATUS MEMORY IN THE EVENT OF A LOSS OF POWER	YES	YES	YES	YES	YES	-	-	-	YES
EQUIPMENT STATUS INDICATOR LIGHTS	YES	YES	YES	YES	YES	YES	YES	YES	YES
EQUIPMENT STATUS INFORMATION SIGNALS	YES	YES	YES	YES	YES	YES	YES	-	YES
REMOTE RESET	YES	YES	YES	YES	YES	-	-	-	YES
DAILY VENTILATION OPTION	YES	YES	YES	YES	YES	YES	-	-	-
BUILT-IN CONTROL PANEL	YES	YES	YES	YES	YES	YES	YES	-	-
CONTROL OF MULTIPLE INDEPENDENT LOBBIES	YES	YES	YES	-	-	-	-	-	-
REVERSIBLE FOR SMOKE EXTRACTION	-	YES	-	-	YES	-	-	-	-
STANDBY FAN	-	YES	YES	YES	-	-	YES	YES	-
COMPATIBLE WITH FIRE-FIGHTER CONTROL PANEL	YES	YES	YES	YES	YES	YES	YES	-	-
INLET SMOKE DETECTION	YES	YES	YES	YES	-	-	-	-	-
INLET MOTORISED HATCH CONTROL	1	3	2	1/2	1	-	-	-	-
SELF-CALIBRATION AND LEAK DETECTION	YES	YES	YES	-	-	-	-	-	-
QUICK SETUP	-	YES	-	-	-	-	-	-	-
CONNECTION TO BMS SYSTEMS	YES	YES	YES	YES	YES	YES	YES	YES	YES
TOUCH SCREEN FOR PROGRAMMING PARAMETERS	YES	YES	YES	-	-	-	-	-	YES
MENU FOR CHECKING SYSTEM COMPONENTS	YES	YES	YES	-	-	-	-	-	-
TEST SELECTOR FOR STARTING THE FAN	-	YES	-	YES	YES	YES	YES	YES	-
ALARMS MENU	YES	YES	YES	-	-	-	-	-	YES
DUAL SPACE OVERPRESSURE CONTROL	-	YES	-	-	-	-	-	-	-
CONFIGURABLE MODE TO CLOSE EXIT DOOR	-	YES	-	-	-	-	-	-	-
VENTILATION OPTION WITH ENVIRONMENTAL SENSORS	-	YES	-	-	-	-	-	-	-





# Smoke extract control systems

For air supply and smoke extract systems in fires, with or without jet fans, SODECA has the **BOXPARK**, which facilitate the integration of the ventilation system with CO and fire detection alarms.

The BXPARK is adapted to common ventilation system needs in fires, and can also be customised for large projects with the **possibility of adding modules to the system.**

We also supply fire-fighting and maintenance control panels.



## Control system BOXPARK CONTROL MASTER

### BOXPARK ADVANCED PLC

### BOXPARK ADVANCED

### BOXPARK BASIC



PLC with sequencing and advanced communications

**Includes PLC** with sequencing algorithm for ventilation systems (ducted or Jet fans).

**MODBUS and WEB communications** for supervision and remote control

**Includes PLC**  
No advanced communications

**Not included**  
No advanced communications



Number of zones and damper control

Can manage a **single zone or multiple zones.**

**Controls motorised dampers**

Can manage a **single zone or multiple zones.**

**Controls motorised dampers**

Designed for a **single zone only.**

Does not **manage motorised dampers**



Option to add a remote panel for firefighters

Option of remote **operation by firefighters**

Option of remote **operation by firefighters**

**Not available**



## Smoke extract and **CO control systems**

For automated operation of ventilation systems, depending on the specific needs of the car park.

This equipment controls the ventilation system operation, depending on the CO concentration or through the activation from a fire detection station. It also allows day-to-day programming of the car park ventilation system.



**BOXPARK**



**CENTRAL CO**

Applications	
Automated or manual ventilation control	CO concentration control
Installation	
In plant room	In plant room
Automated operating modes	
By fire detection. By CO detection.	Standard automation. Advanced automation with power savings.
Manual operation	Programmable activation levels
Speed selection (high/low). Fan selection.	Three levels with digital outputs. Analogue output for variable frequency drive.
Time programming	Programmable activation levels
Ventilation system (high/low). Operating periods.	1, 2 or 3 zones with up to 32 sensors per zone. Independent zone management.
Connection to	
MODBUS, RTU and CAN open systems	MODBUS
Ventilation control	
By contactors. Variable frequency control.	1, 2 or 3 progressive stages. Proportional control.

## EUROPE

## FINLAND

**Sodeca Finland, Oy**  
**HUITTINEN**  
 Sales and Warehouse  
 Mr. Kai Yli-Sipilä  
 Metsälinnankatu 26  
 FI-32700 Huittinen  
 Tel. + 358 400 320 125  
[orders.finland@sodeca.com](mailto:orders.finland@sodeca.com)

## FINLAND

**Sodeca Finland, Oy**  
**VANTAA**  
 Sales and Warehouse  
 Ainontie 12  
 FI-01630 Vantaa

**Smoke Extraction**  
 Mr. Antti Kontkanen  
 Tel. +358 400 237 434  
[akontkanen@sodeca.com](mailto:akontkanen@sodeca.com)  
 Mrs. Kaisa Partanen  
 Tel. +358 451 308 038  
[kpartanen@sodeca.com](mailto:kpartanen@sodeca.com)

**Industrial Applications**  
 Mr. Jarno Pikkumäki  
 Tel. +358 407 723 472  
[jpikkumaki@sodeca.com](mailto:jpikkumaki@sodeca.com)

## ITALIA

**Sodeca Italia**  
 Viale del Lavoro, 28  
 37036 San Martino B.A.  
 (VR), ITALY  
 Tel. +39 045 87 80 140  
[vendite@sodeca.com](mailto:vendite@sodeca.com)

## NORWAY

**Sodeca Norge AS**  
 Per Krohgs vei 4C  
 1065 Oslo  
 NORWAY  
 Tel. +47 23 28 80 90  
[post@sodeca.no](mailto:post@sodeca.no)

## PORTUGAL

**Sodeca Portugal, Unip. Lda.**  
**PORTO**  
 Rua Veloso Salgado 1120/1138  
 4450-801 Leça de Palmeira  
 Tel. +351 229 991 100  
[geral@sodeca.pt](mailto:geral@sodeca.pt)

**LISBOA**  
 Pq. Emp. da Granja Pav. 29  
 2625-607 Vialonga  
 Tel. +351 219 748 491  
[geral@sodeca.pt](mailto:geral@sodeca.pt)

**ALGARVE**  
 Rua da Alegria, 33  
 8200-569 Ferreiras  
 Tel. +351 289 092 586  
[geral@sodeca.pt](mailto:geral@sodeca.pt)

## UNITED KINGDOM

**Sodeca Fans UK, Ltd.**  
 Mr. Mark Newcombe  
 Tamworth Enterprise Centre  
 Philip Dix House, Corporation  
 Street, Tamworth, B79 7DN  
 UNITED KINGDOM  
 Tel. +44 (0) 1827 216 109  
[sales@sodeca.co.uk](mailto:sales@sodeca.co.uk)

## AMERICA

## CHILE

**Sodeca Ventiladores, SpA.**  
 Sra. Sofia Ormazábal  
 Santa Bernardita 12.005  
 (Esquina con Puerta Sur)  
 Bodegas b24 a b26,  
 San Bernardo, Santiago, CHILE  
 Tel. +56 22 840 5582  
[ventas.chile@sodeca.com](mailto:ventas.chile@sodeca.com)

## COLOMBIA

**Sodeca Latam, S.A.S.**  
 Sra. Luisa Stella Prieto  
 Calle7 No. 13 A-44  
 Manzana 4 Lote1, Montana  
 Mosquera, Cundinamarca  
 Bogotá, COLOMBIA  
 Tel. +57 1 756 4213  
[ventascolombia@sodeca.co](mailto:ventascolombia@sodeca.co)

## PERU

**Sodeca Perú, S.A.C.**  
 Sr. Jose Luis Jiménez  
 C/ Mariscal Jose Luis de  
 Orbegoso 331. Urb. El pino.  
 15022, San Luis. Lima, PERÚ  
 Tel. +51 1 326 24 24  
 Cel. +51 994671594  
[comercial@sodeca.pe](mailto:comercial@sodeca.pe)

## MIDDLE EAST AND ASIA

## UNITED ARAB EMIRATES

**Sodeca MEA Trading L.L.C**  
 C-83, Sama Residence  
 Al Nahda First, Deira, DUBAI  
[orders.mea@sodeca.com](mailto:orders.mea@sodeca.com)



## HEADQUARTER

**Sodeca, S.L.U.**  
 Pol. Ind. La Barricona  
 Carrer del Metall, 2  
 E-17500 Ripoll  
 Girona, SPAIN  
 Tel. +34 93 852 91 11  
 General sales: [comercial@sodeca.com](mailto:comercial@sodeca.com)  
 Export sales: [ventilation@sodeca.com](mailto:ventilation@sodeca.com)

## PRODUCTION PLANT

**Sodeca, S.L.U.**  
 Ctra. de Berga, km 0,7  
 E-08580 Sant Quirze de Besora  
 Barcelona, SPAIN  
 Tel. +34 93 852 91 11  
 General sales: [comercial@sodeca.com](mailto:comercial@sodeca.com)  
 Export sales: [ventilation@sodeca.com](mailto:ventilation@sodeca.com)



[www.sodeca.com](http://www.sodeca.com)

